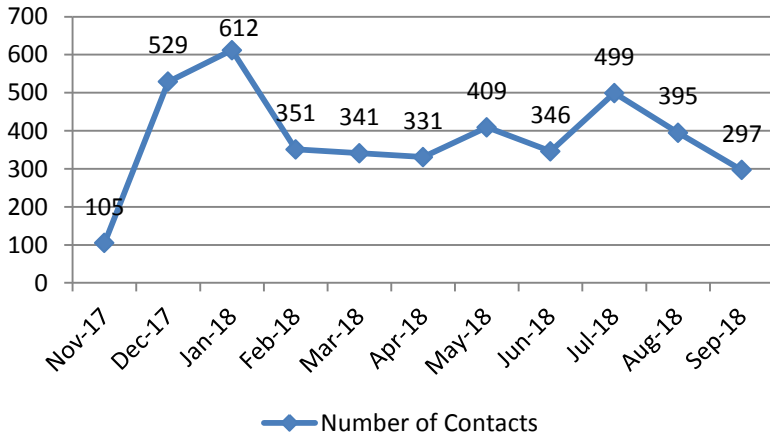


# Great Start Collaborative Trusted Advisors

## Community Member Contacts



## Top 10 Resources:

Resource	Number of Contacts
Food Assistance	1239
Employment	1164
Housing	1006
Clothing	624
Medical	176
Utility Assistance	141
Mental Health	119
Child Care	57
DHHS	55
Dental	51

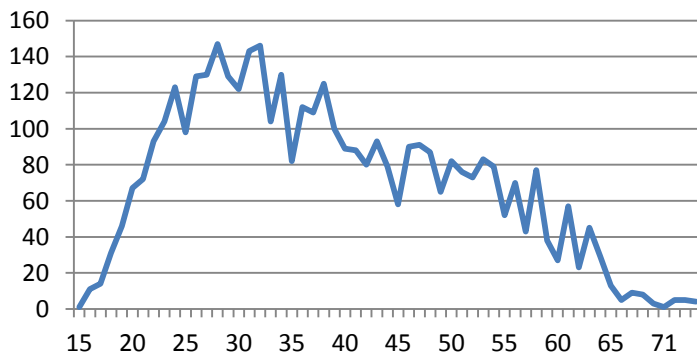
## Facts at a Glance

Number of contacts (Nov 17 - Sep 18)	4,218
Number of contacts with children under the age of 18	2,049
Male, n=1,996	47.4%
Female, n=2,215	52.6%
Average age	38.43

## Top 10 Locations:

Location	Number of Contacts
Interfaith Shelter	1431
Food Pantries	522
Community Living Room	278
Churches	169
Michigan Works	161
Parole Office	158
Parks/Community Centers	130
Homes/Apartment Complexes	127
Drop In Center	109
Health Department	105

## Age Distribution



## Race/Ethnicity of Community Member Contacts

