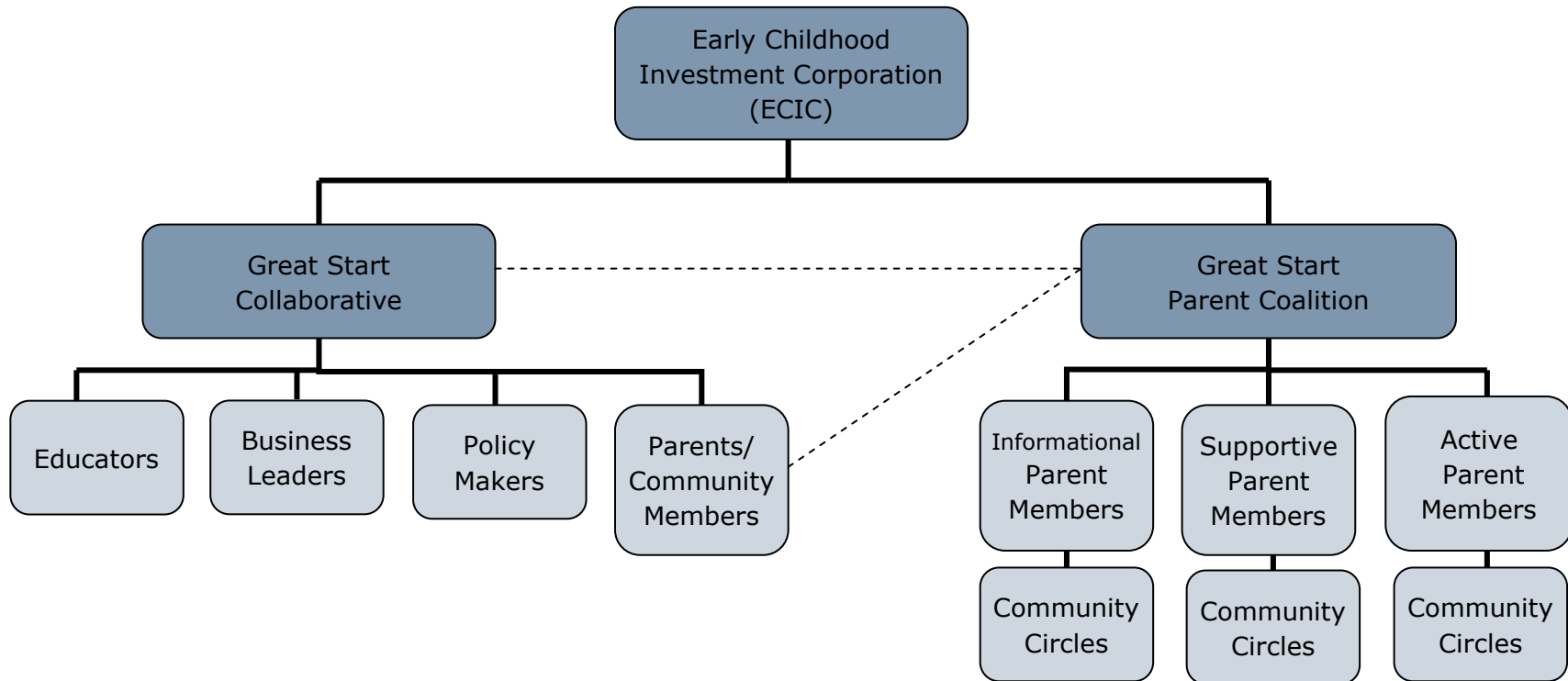


# Jackson County Great Start



**Informational Parent Members:** parents who do not wish to attend meetings or functions but wish to be aware of issues via email in order to voice their opinion and act within their *community circles* e.g. work, church, school, playgroups, neighborhood, etc.

**Supportive Parent Members:** parents who attend functions intermittently and actively flow information to and from their community circles

**Active Parent Members:** members who represent a group(s) of parents, contribute to the GSPC work plan, and actively flow information to and from their community circles